



TBL2 Polyclonal Antibody

Catalog No	YP-Ab-02074
Isotype	IgG
Reactivity	Human;Rat;Mouse;
Applications	WB;IHC;IF;ELISA
Gene Name	TBL2
Protein Name	Transducin beta-like protein 2
Immunogen	The antiserum was produced against synthesized peptide derived from human TBL2. AA range:381-430
Specificity	TBL2 Polyclonal Antibody detects endogenous levels of TBL2 protein.
Formulation	Liquid in PBS containing 50% glycerol, 0.5% BSA and 0.02% sodium azide.
Source	Polyclonal, Rabbit,IgG
Purification	The antibody was affinity-purified from rabbit antiserum by affinity-chromatography using epitope-specific immunogen.
Dilution	WB: 1/500 - 1/2000. IHC: 1/100 - 1/300. ELISA: 1/5000.. IF 1:50-200
Concentration	1 mg/ml
Purity	≥90%
Storage Stability	-20°C/1 year
Synonyms	TBL2; WBSCR13; Transducin beta-like protein 2; WS beta-transducin repeats protein; WS-betaTRP; Williams-Beuren syndrome chromosomal region 13 protein
Observed Band	50kD
Cell Pathway	endoplasmic reticulum,integral component of endoplasmic reticulum membrane,
Tissue Specificity	Kidney,Testis,Whole embryo,
Function	disease:Haploinsufficiency of TBL2 may be the cause of certain cardiovascular and musculo-skeletal abnormalities observed in Williams-Beuren syndrome (WBS) [MIM:194050]. WBS is a rare developmental disorder. It is a contiguous gene deletion syndrome involving genes from chromosome band 7q11.23.,PTM:Phosphorylated upon DNA damage, probably by ATM or ATR.,similarity:Contains 7 WD repeats.,
Background	This gene encodes a member of the beta-transducin protein family. Most proteins of the beta-transducin family are involved in regulatory functions. This protein is possibly involved in some intracellular signaling pathway. This gene is deleted in Williams-Beuren syndrome, a developmental disorder caused by deletion of multiple genes at 7q11.23. [provided by RefSeq, Jul 2008],



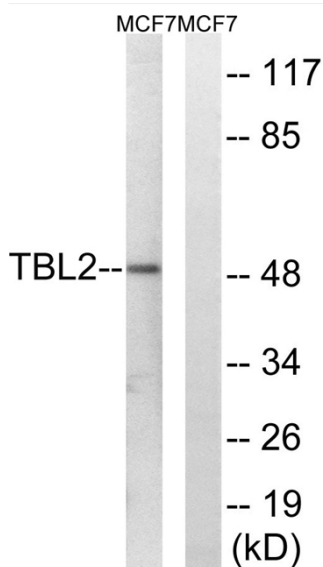
matters needing attention

Avoid repeated freezing and thawing!

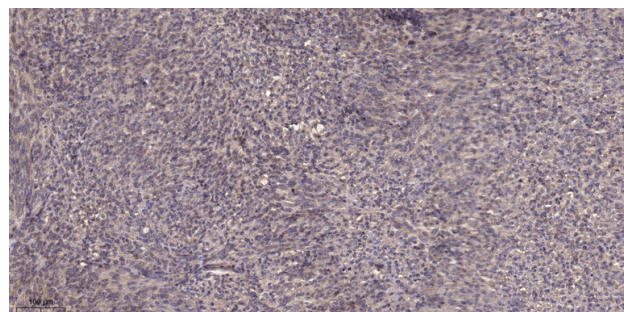
Usage suggestions

This product can be used in immunological reaction related experiments. For more information, please consult technical personnel.

Products Images



Western blot analysis of lysates from MCF-7 cells, using TBL2 Antibody. The lane on the right is blocked with the synthesized peptide.



Immunohistochemical analysis of paraffin-embedded human Colon cancer. 1, Antibody was diluted at 1:200(4° overnight). 2, Tris-EDTA, pH9.0 was used for antigen retrieval. 3, Secondary antibody was diluted at 1:200(room temperature, 45min).